



2020-2021

Dear Galion Families & Caregivers,

Despite the new and challenging circumstances that currently surround us, I hope that you have had a safe and enjoyable summer. I speak for the entire Galion City Schools team when I say that we are looking forward to welcoming our students back this fall. While school may look a little different, we are ready to embrace the necessary changes and charge onward into the future.

No matter the unique complexities we must navigate this year, we will remain focused on our mission - to prepare students with a rigorous education that enables them to be contributing members of our community. Our guiding motivation of believe, achieve and succeed has never been more important. It will take a collaborative effort on the part of many individuals to make this happen. I am truly confident that, together, we can make this a reality.

We have been working diligently on the components of the Galion City Schools Restart Plan since the early summer. It has been quite a test to direct this work with so many unknown variables and contributing factors. Our plan is informed by guidance from local, state and national Boards of Health, The Centers for Disease Control, The State of Ohio and The Ohio Department of Education. Additionally, we have held numerous discussions and sought feedback from staff members, families and other local stakeholders to assist in its formation.

Our goal for the 2020-2021 school year is to provide in-person instruction for our students as much as possible. However, we have also prepared alternative options if in-person instruction is not in the best interest of students and staff members because of increased health and safety risks. As you review our plan, please keep in mind that student safety was our number one priority as we created the various models of instruction.

It is our promise to the Galion community to remain diligent and flexible in the coming months. With your help, we will overcome any obstacles that stand in our way.

Sincerely,

Jennifer Allerdin, Superintendent
Galion City Schools

Galion City Schools has identified
the following as guiding
principles of our Reopening Plan:

Health & Safety

Achievement

Wellness

Galion City Schools trusts that no matter
the environment, all students can

Believe • Achieve • Succeed

Galion City Schools' mission is to...

Prepare students with a rigorous education that enables them to be contributing members of our community. We provide a safe, respectful environment that cultivates leaders of tomorrow. Our guiding principle is Believe in yourself, Achieve your greatest potential, and Succeed in all aspects of life.

In-Person Educational Options

Crawford County Risk Levels

LEVEL 1	LEVEL 2	LEVEL 3	LEVEL 4
Public Emergency Active exposure and spread. Follow all current health orders.	Public Emergency Increased exposure and spread. Exercise high degree of caution. Follow all current health orders.	Public Emergency Very high exposure and spread. Limit activities as much as possible. Follow all current health orders.	Public Emergency Severe exposure and spread. Only leave home for supplies and services. Follow all current health orders.

Risk Level Correlation to Galion City Schools Status

LEVEL 1	LEVEL 2	LEVEL 3 3*	LEVEL 4
We're Back Plan All students every day	4 of 5 Plan In-person instruction Monday, Tuesday, Thursday and Friday with remote learning Wednesday	Blended Learning Plan 2 days of in-person instruction and 3 days of remote learning. ALL students will utilize Wednesday as a remote learning day	Remote Learning Plan All students learn from home

Blended Learning Plan Schedule

Orange Group: Students with last names A-L will attend in-person on Monday & Tuesday with remote learning on Thursday & Friday

Blue Group: Students with last names M-Z will attend in-person on Thursday and Friday with remote learning on Monday and Tuesday

*Families who have students with last names in both groups will be scheduled in the same group to assist with family planning. The district will contact families with this unique scenario to reschedule their children into one group.

If/when Crawford County reaches the Level 3* designation (on the verge of Level 4), the district will move to Level 4 protocol.

Facial Coverings Policy

Level 1 – We’re Back Plan

- Face coverings or face shields **strongly recommended** but not required for grades PK-12
 - Grades PK-12 **required** to wear face coverings while transitioning in hallways, while working in small groups for extended periods of time and while riding the bus.
- All teachers and staff **required** to wear face coverings or face shields as mandated by the state

Level 2 – 4 of 5 Plan

- Face coverings or face shields **strongly recommended** but not required for grades PK-12
 - Grades PK-12 **required** to wear face coverings while transitioning in hallways, while working in small groups for extended periods of time and while riding the bus.
- All teachers and staff **required** to wear face coverings or face shields as mandated by the state

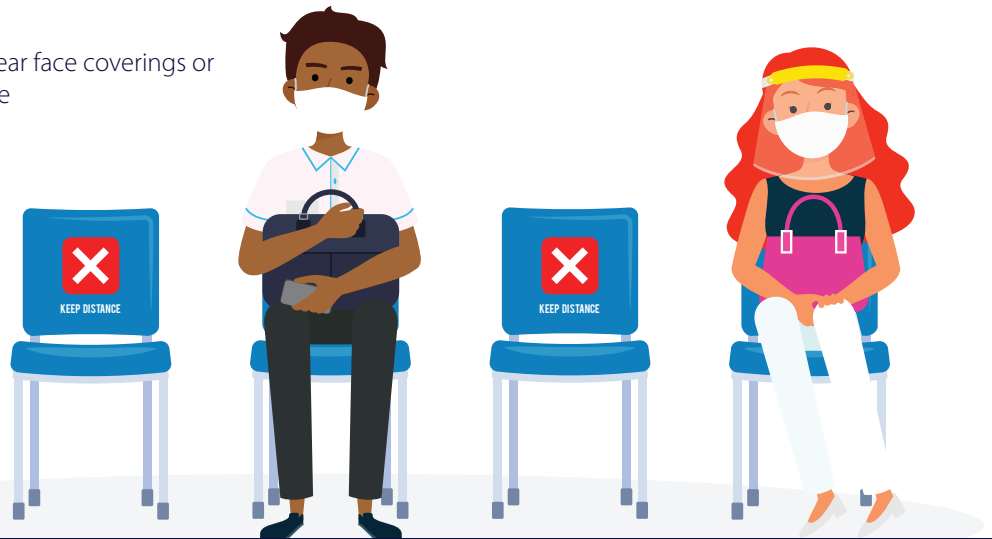
Level 3 – Blended Learning Plan

- Face coverings or face shields **required** for grades 3-12 and **strongly recommended** for grades PK-2
 - The district will provide frequent face covering breaks for students.
- All teachers and staff **required** to wear face coverings or face shields as mandated by the state

Level 4 – Remote Learning Plan

- Not applicable

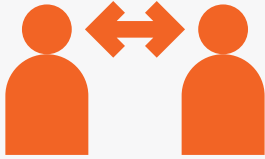
Face shields will be made available by the district for every student and staff member to wear if they choose.



Feasibility and Adaptions

- As recognized by the Centers for Disease Control and Prevention (CDC) “the wearing of cloth face coverings may not be possible in every situation or for some people. In some situations, wearing a cloth face covering may exacerbate a physical or mental health condition, lead to a medical emergency, or introduce significant safety concerns.”
- Exemptions to this policy must be supported by a medical note issued by a nurse practitioner, physician's assistant or doctor. Notes must be submitted to each building's administrator. Adaptions and alternatives will be considered per unique case to reduce risk to all parties involved.

Galion City Schools Restart 2020 Need to Know



Social Distancing

1. Classrooms will be spaced to the fullest extent possible at all grade levels.
2. Non-essential classroom groupings and large gatherings will be minimized.
3. Controlled traffic flow in hallways.
4. Easily recognizable signage specifying guidelines and expectations will be displayed.



Deep Cleaning

1. All buildings will be disinfected throughout the school day and at night.
2. Mid-week deep cleaning will be performed (during applicable models).
3. Continually disinfect common areas based on a set schedule.
4. Students in grades 4-12 to assist in cleaning and disinfecting their own personal space or desk area throughout the school day.



Non-Essential Visitors & Volunteers

1. Limit visits to school as much as possible.
2. Follow posted guidelines and read all instructional signage.
3. Must conduct self-wellness check, including temperature, prior to entering school buildings or grounds.
4. Face coverings required.



Hand Washing/Sanitation

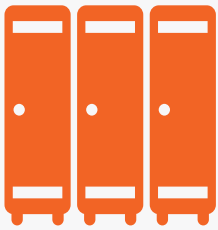
1. Students and staff must sanitize hands (provided) upon entering school buses, buildings and classrooms.
2. Wash hands throughout the school day at regular intervals.
3. Sanitizing breaks provided at regular intervals.
4. District to provide hand sanitizing stations in all buildings and on buses.



Athletics

1. Athletic administration and participation guidelines will be set by guidance issued jointly from the Governor's Office and the OHSAA. Updates and changes will align with county risk levels.
2. Safety protocols (distancing, sanitation, etc.) will be enforced to the extent possible given the individual sport or activity.
3. All district health policies will tightly align with athletic participation requirements.

Galion City Schools Restart 2020 Need to Know



Student Lockers, Hallways & Common Areas

1. Controlled traffic flow in hallways.
2. Locker usage schedule to be provided – goal is to minimize locker usage.
3. Water fountains will be inaccessible – students should bring a clear water bottle to school daily. Water bottle refilling stations will be available.
4. Students should refrain from congregating in hallways – staff members to monitor.



Transportation

1. Maintain appropriate physical distance while at bus stops.
2. Students must sanitize hands (provided) upon entering bus.
3. Face coverings required.
4. Seats will be assigned.
5. Two (2) students per seat.
6. Families will be grouped together.



Cafeteria/Food Service

1. Students must sanitize hands (provided) upon entering cafeteria.
2. If bringing a packed lunch, report immediately to designated seating area.
3. Utilize student ID to pay for lunches – touchless system implemented.
4. Assist in cleaning personal area upon dismissal.
5. All take-home meals must go home with students (do not eat at school or on bus).
6. Breakfasts will be served in classrooms for grades K-2. Grades 3 and above will pick up breakfast and then report to classroom (when applicable).



Wellness Checks

1. Perform daily wellness check for temperature (100°F and up must stay at home) and symptoms.
2. Students are required to remain at home with any illness and/or symptoms.
3. Students perform self-monitoring for symptoms throughout the school day.
4. Students should immediately inform an adult when experiencing symptoms.
5. The district will provide a wellness checklist for family use prior to school.

Responsibilities and Expectations for In-Person Learning



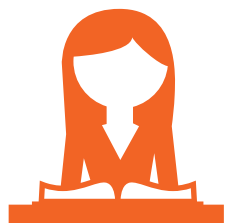
PARENT/CAREGIVER EXPECTATIONS

- Daily temperature and symptom checks prior to school
- Keep children at home when experiencing symptoms
- Thoroughly wash student's hands prior to bus ride or transport to school
- Provide students with a face covering or face shield to wear while at school (See Facial Coverings Policy)



STUDENT EXPECTATIONS

- Communicate at first onset of feeling unwell
- Maintain maximum social distance while in school
- Sanitize hands before entering buses, cafeteria and classroom
- Follow all directional signs in hallways
- Students in grades 4-12 to assist in cleaning and disinfecting their own personal space or desk area throughout the school day
- Follow all facial covering procedures and rules



STAFF MEMBER EXPECTATIONS

- Ensure and maintain classroom setup that provides maximum distance possible
- Provide specific directions and expectations for buses, cafeteria, classrooms, hallways, offices, restrooms, etc.
- Ensure students maintain maximum distance whenever possible
- Eliminate shared classroom materials
- Strictly adhere to district policies for buses, cafeteria, classrooms, hallways, offices, restrooms, etc.
- Disinfect buses, cafeteria, classrooms, hallways, offices, restrooms, etc. nightly
- Guarantee provision of all necessary cleaning supplies
- Monitor students for potential symptoms
- Prohibit all non-essential visitors
- Provide special education services when applicable
- Provide mental health counseling and wellness services when applicable
- Model patience and professionalism with students and parents

GALION DRESS CODE

We understand that discussion of dress code is difficult given the uncertainty of what this school year will bring. However, we believe that developing continuity with our dress code policy for students in grades 3-12 is a vital component to reestablishing a sense of normalcy this fall.

For this reason, we are strongly recommending that families scale down their normal back-to-school purchases so as not to be left with an overabundance of unused clothing.



Previous years
More Clothes



This year
Less Clothes

As the year progresses and we begin to feel more comfortable with the trajectory of in-person learning, families can then better decide what needs still exist in relation to uniforms. As a reminder:

- Students can wear khaki or navy pants, shorts or skirts.
- Students can wear Galion spirit wear (t-shirts) or other handbook-approved shirts.
- Families experiencing financial hardship can contact their individual school buildings to get a uniform voucher to assist with purchasing clothes for this school year. School buildings also have clothing on-hand that families can purchase.

School numbers:

Galion High School:
419-468-6500

Galion Middle School:
419-468-3134

Galion Intermediate School:
419-468-3676

Galion Primary School:
419-468-4010

Additional support information can be provided by the district's Family Engagement Coordinator, Violeta Chini, who can be reached by calling Galion Middle School.



2020-21

School Times



The district will institute new start times for the 2020-2021 school year. We recognize that these changes may cause scheduling and/or childcare issues for some of our families. For this reason, we are currently researching before school programming options that will help to alleviate this issue. More information will follow.

Galion High School and Middle School:

7:25 a.m. - 1:40 p.m.

Galion Intermediate School:

8:15 a.m. - 2:40 p.m.

Galion Primary School:

9:05 a.m. - 3:50 p.m.

100% Online Option Explained

It is important to us that our students, parents and caregivers have an option of 100% remote learning. As such, students will be provided the opportunity to enroll in the Galion Online Academy. Galion Online Academy students have access to the same outstanding education that is offered in a traditional school setting. Additionally, we want to ensure that, during remote learning days, a viable learning option is available.

- Coursework expectations set by Galion City Schools teachers through Galion Online Academy
- Families can schedule in-person lab time to work with teachers (schedule to be determined and communicated as soon as possible)
- Curriculum provided by Northwest Ohio Virtual Academy (NOVA):
 - 100% aligned to Ohio's Content Standards
 - Core, elective, AP and dual enrollment course offerings
 - NCAA sanctioned courses and curriculum
- Grab-and-Go breakfast/lunch available
- Special education services provided
- Mental health/counseling services provided
- Teacher office hours available

Please note: Galion City Schools and our community should be prepared to shift to an all-remote model if directed by state government.

Attendance: Participation-based attendance model. Students are encouraged to complete assignments on a routine schedule.



Participation in online learning will be monitored on a semester basis. Families may choose to return to traditional, in-person learning OR continue/begin online learning at the beginning of the second semester. Students must complete their preferred method of instruction once a selection is made and will not be permitted to change before the start of the next semester.

Responsibilities and Expectations for Galion Online Academy and Remote Learning



PARENT/CAREGIVER EXPECTATIONS

- Check and monitor online progress daily
- Communicate with district staff when student is experiencing problems or difficulty
- Find opportunities for student socialization
- Ensure welfare of district devices
- Set a daily academic routine with child(ren)



STUDENT EXPECTATIONS

- Set daily expectations for academic work
- Communicate with district staff when experiencing problems or difficulty
- Ensure welfare of district devices
- Communicate mental health and social emotional needs
- Complete coursework within allotted timeframes



STAFF MEMBER EXPECTATIONS

- Provide specific directions and expectations for online coursework
- Provide support when students or parent/guardians are experiencing problems or difficulty
- Provide timely communication to students and families
- Create a digital classroom and provide a space to engage with students in a live virtual setting on a regular basis
- Provide special education services when applicable
- Provide mental health counseling and wellness services when applicable
- Model patience and professionalism with students and parents and consistently engage and motivate students toward completion

Galion's Commitment to Social/Emotional Wellness and Mental Health

We will continue to assist students and families who experience stress, confusion, fear, sadness or anxiety during the return to school.

Students will have easy access to:

School Counselors

Nurses

Social Workers

School Administrators

Outside Resources Provided by the District



Adapt and Adjust

As a reminder, plans are based on CURRENT knowledge shared with the public. We will continue to re-evaluate based on evolving conditions, data about the status of the pandemic and recommendations and guidance from public health officials and the scientific community.

